

## brooklyn queens expressway enhancement study

The New York City Economic Development Corporation commissioned Starr Whitehouse and Kiss + Cathcart to perform this study to repair the social and environmental damage done by Robert Moses' sunken portion of the Brooklyn Queens Expressway.

The study targets pedestrian quality of life, connections between communities that have been separated for a generation, and quality of the environment, including air quality, noise. Although guided by the City of New York, considerable community involvement has taken place through a series of public workshops.

A solution proposed by Kiss + Cathcart covers the trench with a lightweight lattice structure which supports sound-absorbing panels, vines and other plantings, and photovoltaic panels. Although from the pedestrian point of view, this productive virtual landscape will look like undulating green hills, it will be more than 50% open area to provide ventilation and daylighting to the highway below.

### The Client:

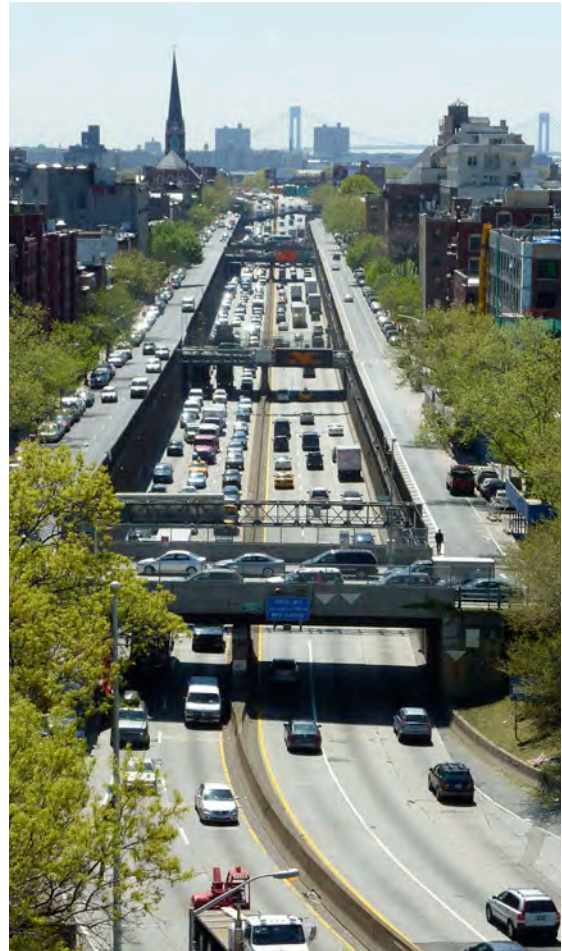
The New York City Economic Development Corporation

### The Team:

Starr Whitehouse Landscape Architects  
Kiss + Cathcart, Architects  
Buro Happold Consulting Engineers  
Sam Schwartz Engineering

### Project Details:

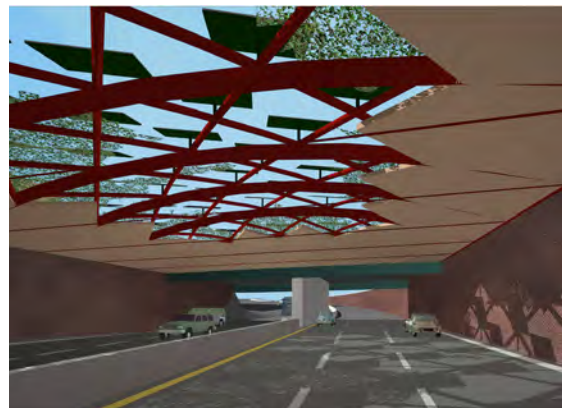
1,000,000 m<sup>2</sup>  
Ongoing, study complete late 2010



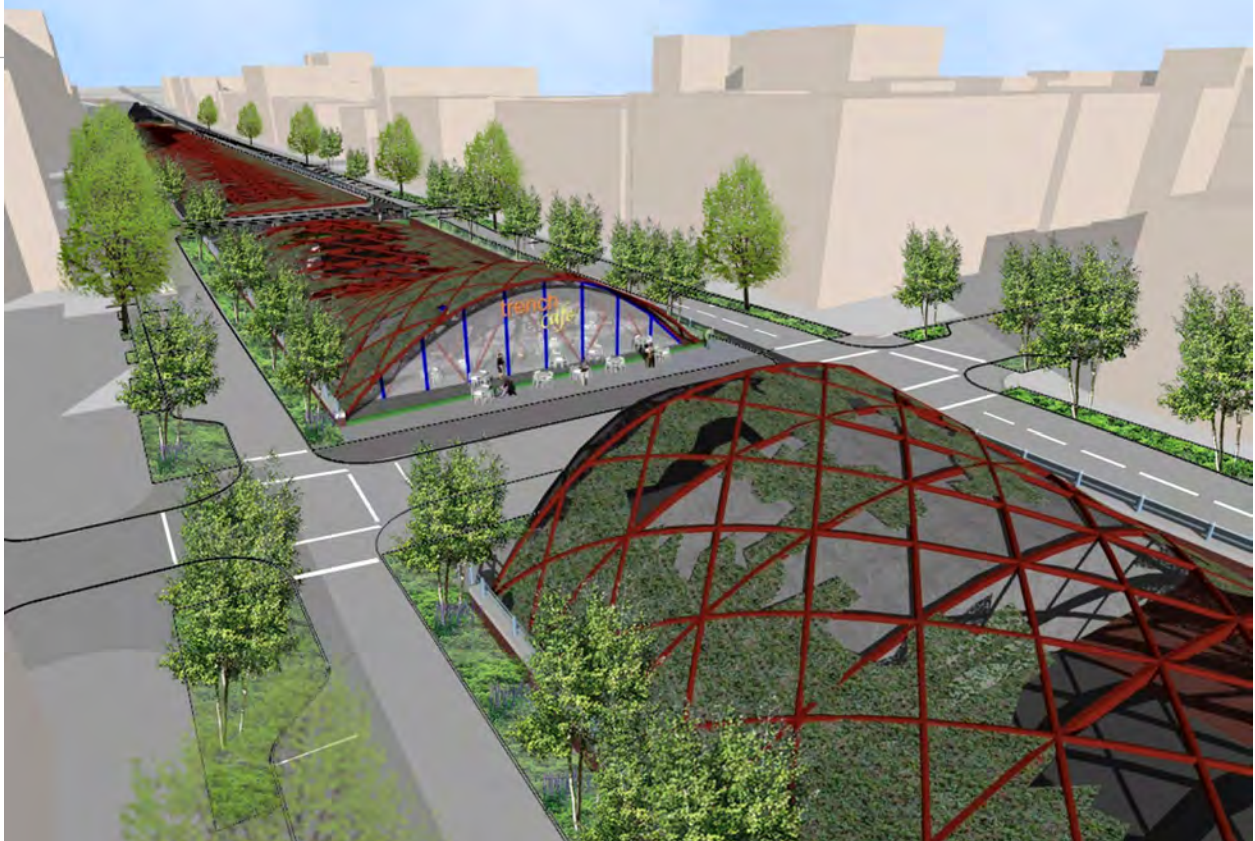
The Brooklyn Queens Expressway trench looking south. Thriving neighborhoods to the east and west were separated in the 1950s.



Community workshop.



Trellis structure from the highway.



Trellis structure looking north from Union Street showing cafe/retail space spanning the highway..



Trellis structure looking south from Congress Street