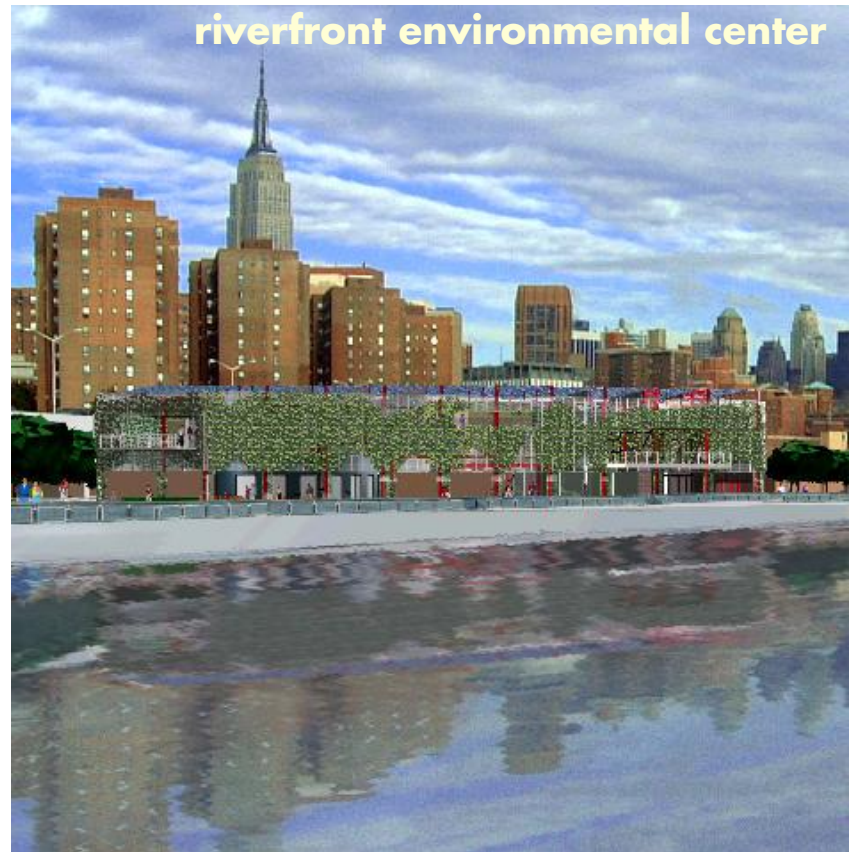
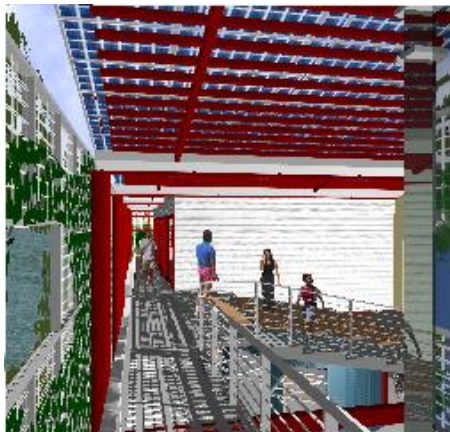


stuyvesant cove



The Stuyvesant Cove Environmental Learning Center illuminates the complex relationship of city, park and river environments, and, through its exhibits and educational programs, suggests ways this relationship can be made more sustainable. The Center's programs focus on the water ecology of the East River and on energy use and conservation in New York City.

The Stuyvesant Cove facility will demonstrate how humans and nature can coexist by showcasing green building technologies. The building will achieve net zero energy consumption, and will employ sophisticated wastewater treatment, passive solar techniques, seasonal shading through vegetation and a building-integrated photovoltaic roof.

Kiss + Cathcart, Architects
ARUP Engineers
Judith Heinz Landscape Architecture
Community Environmental Center, Owner

Kiss + Cathcart, Architects
44 COURT ST. TOWER C
BROOKLYN NY 11201
tel 718 237 2786
fax 718 237 2025
www.kisscathcart.com