



# **Kiss + Cathcart, Architects**

44 COURT ST. TOWER C, BROOKLYN, NY 11201 t +1 718 237 2786 f +1 718 237 2025  
[www.kisscathcart.com](http://www.kisscathcart.com)

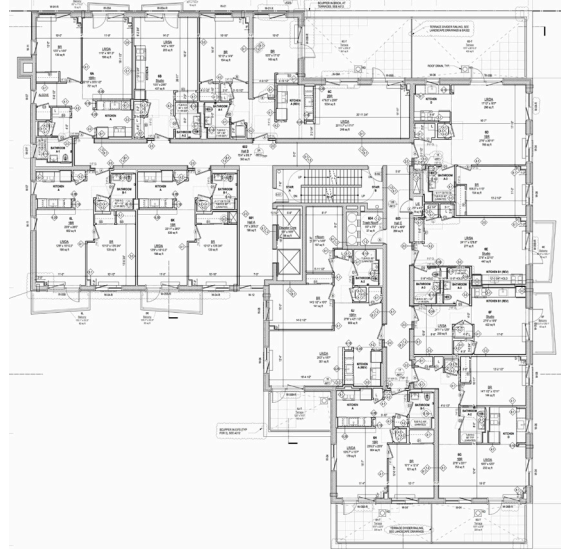
## 22 caton place

22 Caton Place is a new 7-story, 73 unit residential building currently under construction in Kensington, Brooklyn, NY. The building is centrally located to historic Prospect Park, schools, subways, and shopping, and is designed to achieve LEED-Gold and NYSEERDA ENERGY STAR certifications. The highly energy efficient building has a well-insulated envelope and high-performing windows while many of the building forms and materials were selected for their recycled and/or regional content, energy and water-saving capabilities, and durable finishes. The articulated brick façade is enhanced with vine covered balconies and is contextual within the neighborhood.

The building is also designed to meet NYC's Quality Housing zoning requirements, including sunlit elevator lobbies and to address the intent of the NYC Active Design Guidelines, such as common stairs located in a place of prominence. Natural daylighting and private balconies, terraces, or gardens for most units reinforce the relationship with the outdoor environment.

The 86,000 s.f. project includes amenities such as bike storage, lounge, gym and stretch/yoga room, kids' playroom, and both interior and exterior areas for pet washing. Below-grade vehicular parking creates a large, south-facing landscaped courtyard with a boule court.

The accessible common rooftop is equipped with gas grills, outdoor furniture, and a custom-built pergola to encourage outdoor activities. The roof terrace also promotes urban agriculture with composting facilities, rainwater harvesting, and raised garden plots so residents can grow their own vegetation. Light colored roofing and pavers and a partially vegetated green roof help to reduce cooling costs, cut energy usage and lower greenhouse gas emissions.





**The Client:**  
The Hudson Companies Incorporated

**The Team:**  
Kiss + Cathcart, Architects:  
Greg Kiss, Partner In Charge; Clare  
Miflin, Project Designer; Laurie Cheung,  
Project Manager; Jeff Miles, Project  
Architect

Abraham Joselow P.C., P.E.  
Severud Associates  
Starr Whitehouse Landscape Architects  
and Planners PLLC  
Steven Winters Associates  
Lettire Construction

**Project Details:**  
\$17,000,000  
86,081 gsf

In construction.  
Anticipated completion 2014

